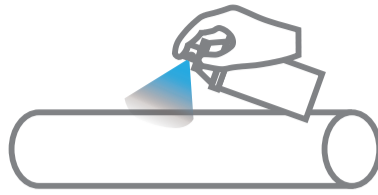
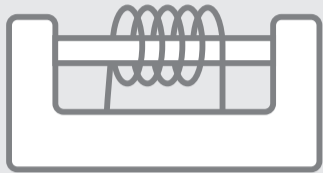


MAGNAFLUX MAGNETIC PARTICLE INSPECTION PROCESS GUIDE



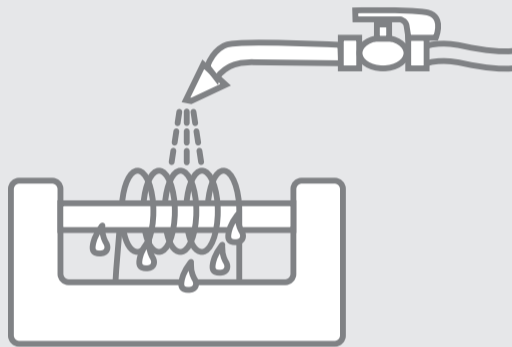
Pre-clean with Spotcheck SKC-S

CURRENT/FIELD FLOW – FIXED BENCHES



MAG 20 Series
MAG 40 Series
MAG 50 Series

Mount the part to be tested and select current and/or field flow mode(s)



1. Start the flow of magnetic ink over the part
2. Switch on the current/field flow
3. Stop the flow of magnetic ink over the part
4. Switch off the current/field flow

FIELD FLOW – PORTABLE YOKES AND COILS



Y1 Yoke
Y6 Yoke
Y7 Yoke
Y8 Yoke
YM5 Yoke

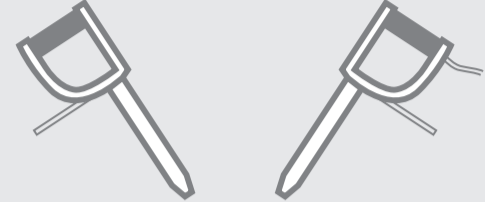


L10 Magnetising Coil
Split Coils

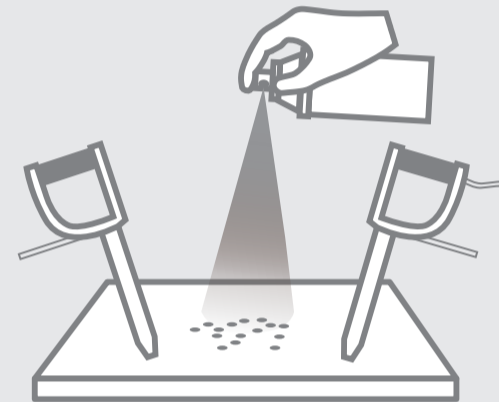


1. Switch on the magnetising field
2. Apply the magnetic powder/ink to the part
3. Switch off the magnetising field

CURRENT FLOW – PORTABLE PRODS



Standard Prod Sets



1. Switch on the current
2. Apply the magnetic powder/ink to the part
3. Switch off the current

FLUORESCENT MPI POWDERS/INKS

Powders

Magnaglo 14A
Magnaglo MG 410
Magnaglo MG 601

Concentrate

Magnaglo WB-12

Oil Vehicle

Magnaglo/Magnaflux Carrier II

Ready-to-Use Inks

Magnaglo 14HF
Magnaglo 410HF

Water Bath Additives

Magnaflux WA-1
Magnaflux WA-2

VISIBLE MPI POWDERS/INKS

Dry Method MPI

Magnavis 1 Grey
Magnavis 3A Black
Magnavis 8A Red

Ready-to-Use Inks

Magnavis 7HF

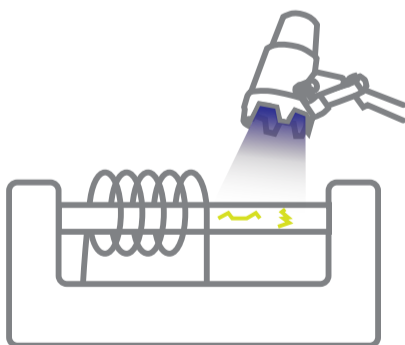
Concentrate

Magnavis WB27

White Contrast Paint

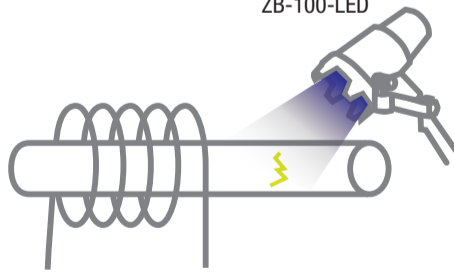
Magnavis WCP-2

Inspect
Fluorescent



Fixed Benches

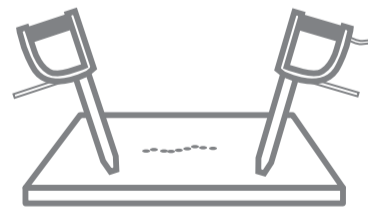
ZB-100F
ZB-100-LED



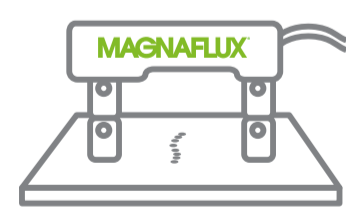
Portable Coils



Inspect
Visible

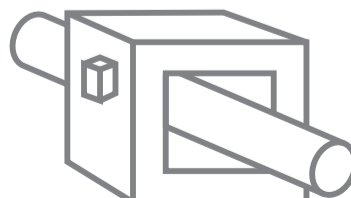


Portable Prods



Portable Yokes

DEMAGNETISATION



1. Put part in coil
2. Turn on current
3. Draw part through demagnetising unit
4. Check for residual magnetism
5. Remove part from unit
6. Turn off current